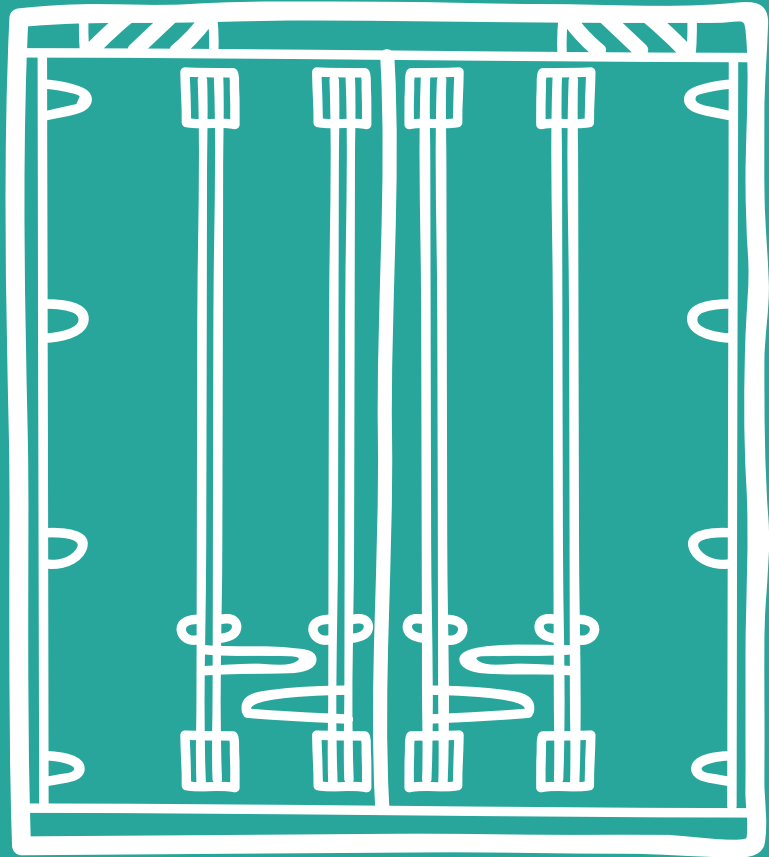


CONTAINER
DIMENSIONS

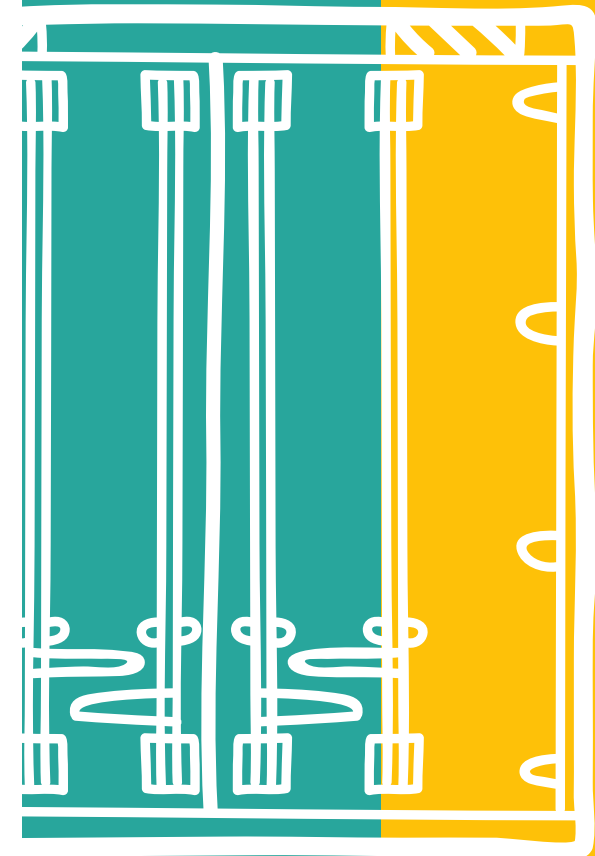


SCLOE

Measure	20ft
Internal length	5.9m / 19.4ft
Internal width	2.3m / 7.8ft
Internal height	2.3m / 7.8ft
Tare weight	2,300kg/5,071.5 lbs
Payload capacity	25,000kg/55,126.9 lbs
Cubic capacity	33.2 m ³ /1,172 cu ft

Measure	40ft
Internal length	12.03m/39.5ft
Internal width	2.3m / 7.9ft
Internal height	2.3m / 7.9ft
Tare weight	3,750kg/8,268.8 lbs
Payload capacity	27,600kg/61,200 lbs
Cubic capacity	67,7 cu m/2,389 cu ft

Measure	40ft HC
Internal length	12.03m/39.5ft
Internal width	2.4m / 7.9ft
Internal height	2.70m / 8.10ft
Tare weight	3,900kg/8,598 lbs
Payload capacity	28,600kg/63,052 lbs
Cubic capacity	76.3m ³ /2,694.5 cu ft

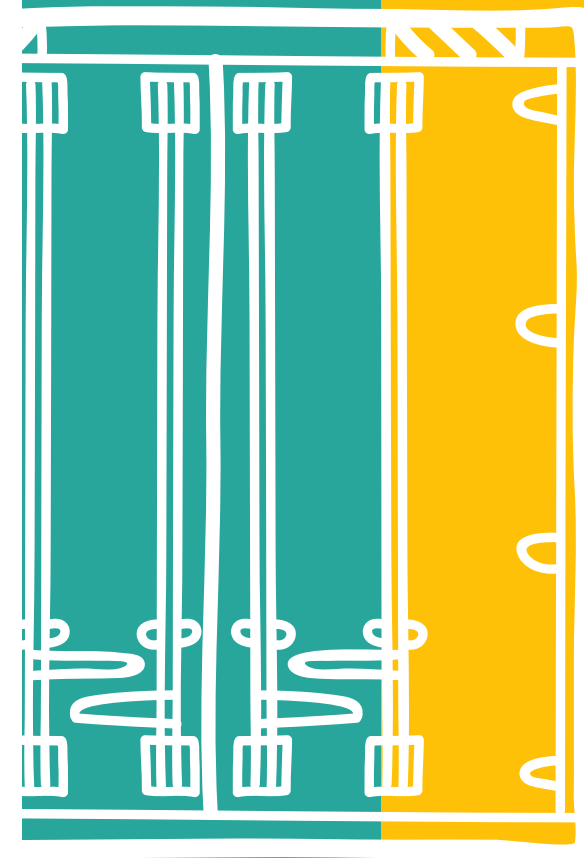


SCLOE

Measure	20ft Reefer	40ft Reefer	40ft HC Reefer
Internal length	5.44m/17.9ft	11.56m/37.9ft	11.58m/38.0 ft
Internal width	2.29m / 7.5ft	2.28m / 7.5ft	2.29m / 7.5 ft
Internal height	2.27m / 7.4ft	2.25m / 7.4ft	2.40m / 7.9 ft
Tare weight	3,080kg/6,791.4 lbs	4,800kg / 10,584 lbs	4,480kg/9,880 lbs
Payload capacity	27,700kg/61,078.5 lbs	29,520kg/65,080 lbs	29,520kg/65,080 lbs
Cubic capacity	28.3 m3/993.4 cu ft	67.3 m3/2,380 cu ft	67.3 m3/2,380 cu ft

Measure	20ft Open Top	40ft Open Top
Internal length	5.89m 19.4ft	12.03m/39.5ft
Internal width	2.35m / 7.8ft	2.4m / 7.9ft
Internal height	2.3m / 7.9ft	2.34m/7.8ft
Tare weight	2,260kg/5,982 lbs	3,980kg/8,774 lbs
Payload capacity	28,220kg/62,214 lbs	26,500kg/58,422 lbs
Cubic capacity	32.7m3/1,155 cu ft	66.7m3/2,356 cu ft

Measure	20ft Flat Rack	40ft Flat Rack
Internal length	5.94m / 19ft	12.13m/39.8ft
Internal width	2.35m / 7.7ft	2.40m / 7.9ft
Internal height	2.35m / 7.7ft	2.14m / 7ft
Tare weight	2,360kg/5203.8 lbs	5,000kg / 11,025 lbs
Payload capacity	30,140kg/66,458.7 lbs	40,000kg/88,200 lbs
Cubic capacity	32.7 m3/1,154.3 cu ft	62.2 m3/2,195.7 cu ft



SCLOE